

LCE12854 - F01	GROUND AND FIRST FLOOR FIRE SERVICES ARRANGEMENTS, DRAWING INDEX AND GENERAL NOTES.
LCE12854 - F02	SECOND AND THIRD FLOOR FIRE SERVICES ARRANGEMENTS.
LCE12854 - F03	LEGEND OF SYMBOLS AND DETAILS.

1. THE FIRE SERVICES DRAWINGS SHALL BE READ IN CONJUNCTION WITH ARCHITECTURAL DRAWINGS, DETAILS AND OTHER ENGINEERING DRAWINGS AND SPECIFICATIONS AND WITH OTHER SUCH WRITTEN INSTRUCTIONS AS MAY BE ISSUED DURING THE COURSE OF THE CONTRACT.
2. IF ANY DISCREPANCY OCCURS ON THE ENGINEERS DRAWINGS OR BETWEEN DRAWINGS AND SPECIFICATION, THE CONTRACTOR SHALL, DURING ORDERING ASSUME THE LARGER/GREATER QUANTITY. ANY DISCREPANCY SHALL BE REFERRED TO THE ENGINEER BEFORE PROCEEDING WITH THE WORK.
3. SUBSTITUTIONS MUST BE APPROVED BY THE ENGINEER AND BE CLEARLY PRESENTED IN THE TENDER OFFER.
4. UNLESS NOTED OTHERWISE ALL DIMENSIONS ARE IN MILLIMETRES. ALL PIPEWORK SIZES SHOWN ARE CLEAR INTERNAL DIMENSIONS ONLY.
5. ALL ROUTES OF PIPEWORK ARE SHOWN INDICATIVE AND TO INDICATE THE PRINCIPLE DESIGN. FINAL ROUTES ARE TO BE CONFIRMED AS PART OF THE TOP DRAWING PREPARATION PHASE AND COORDINATED ON SITE WITH ALL OTHER TRADES PRIOR TO INSTALLATION.
6. DO NOT SCALE OFF DRAWINGS. ALL DIMENSIONS SHALL BE VERIFIED FROM THE ARCHITECT DRAWINGS AND BY ACTUAL SITE MEASUREMENTS PRIOR TO MANUFACTURING AND INSTALLING OF FIRE SERVICES.
7. THE FIRE CONTRACTOR SHALL BE RESPONSIBLE FOR SETTING OUT OF THEIR WORKS BY COORDINATING WITH ALL ASSOCIATED TRADES AND SERVICES.
8. ALL PENETRATIONS THROUGH COMPARTMENT WALLS OR FLOORS SHALL BE SEALED WITH SUITABLE APPROVED MATERIALS IN AN APPROVED MANNER TO MAINTAIN THE INTEGRITY OF THE BARRIER, IN ACCORDANCE WITH BCA SPECIFICATION C3.15.
9. ALL ROUTES OF EXISTING PIPEWORK SHOWN ARE INDICATIVE ONLY. UNDERGROUND SURVEY OR PIPE LOCATION MUST BE UNDERTAKEN BY THE FIRE SERVICES CONTRACTOR OR BUILDER PRIOR TO UNDERTAKING WORK ON SITE TO VERIFY LOCATIONS.
10. COORDINATE FINAL LOCATION OF SMOKE DETECTORS, AND EMERGENCY WARNING SPEAKERS WITH LIGHTING AND AIR CONDITIONING LAYOUT.
11. SMOKE DETECTORS SHALL BE POSITIONED A MINIMUM OF 4.00m FROM A WALL OR CEILING BULKHEAD, MECHANICAL AIR DIFFUSER OR CEILING FAN.

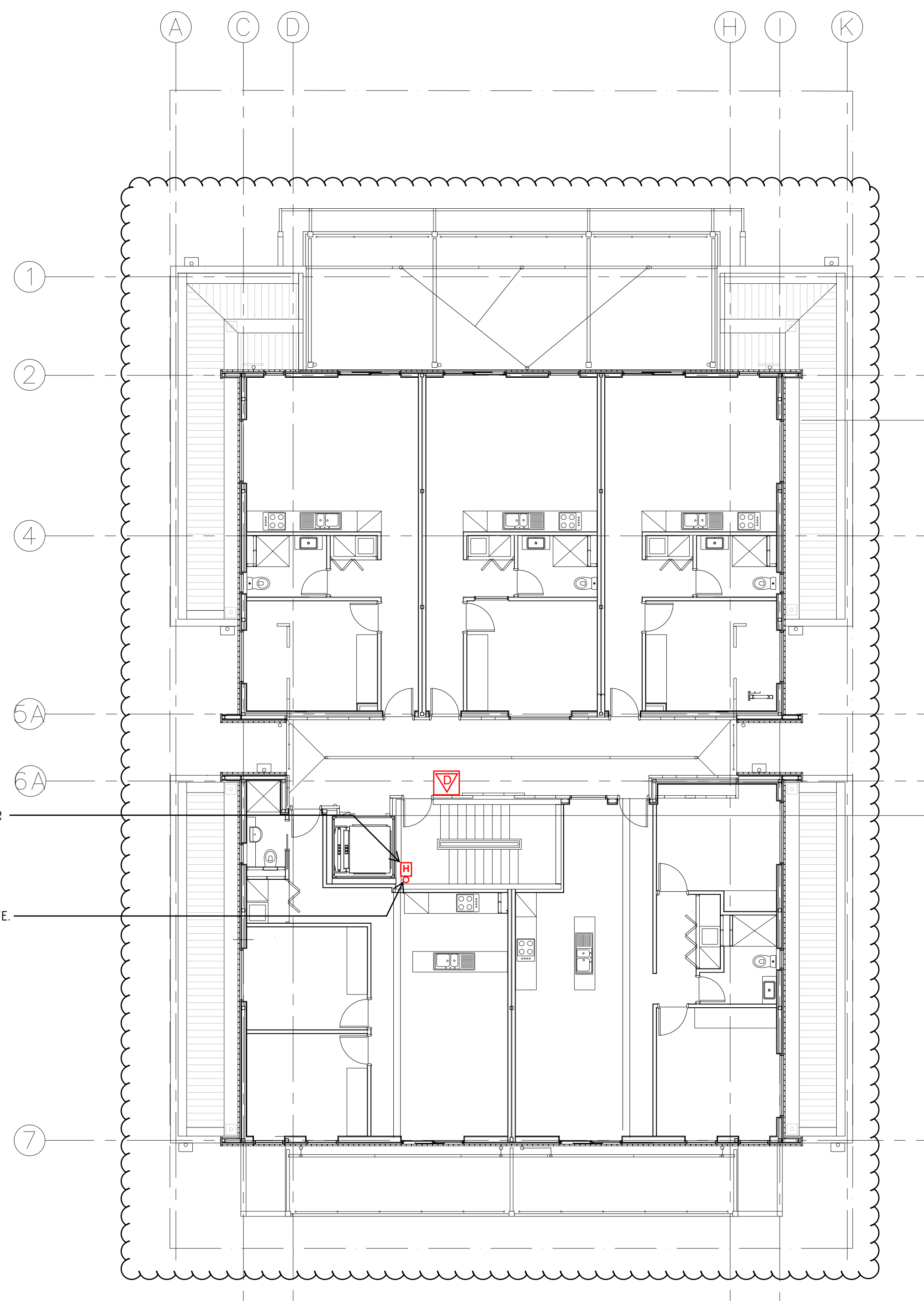


Ø150 FIRE HYDRANT MAIN TO RISE UP TO SERVE SECOND AND THIRD FLOORS.

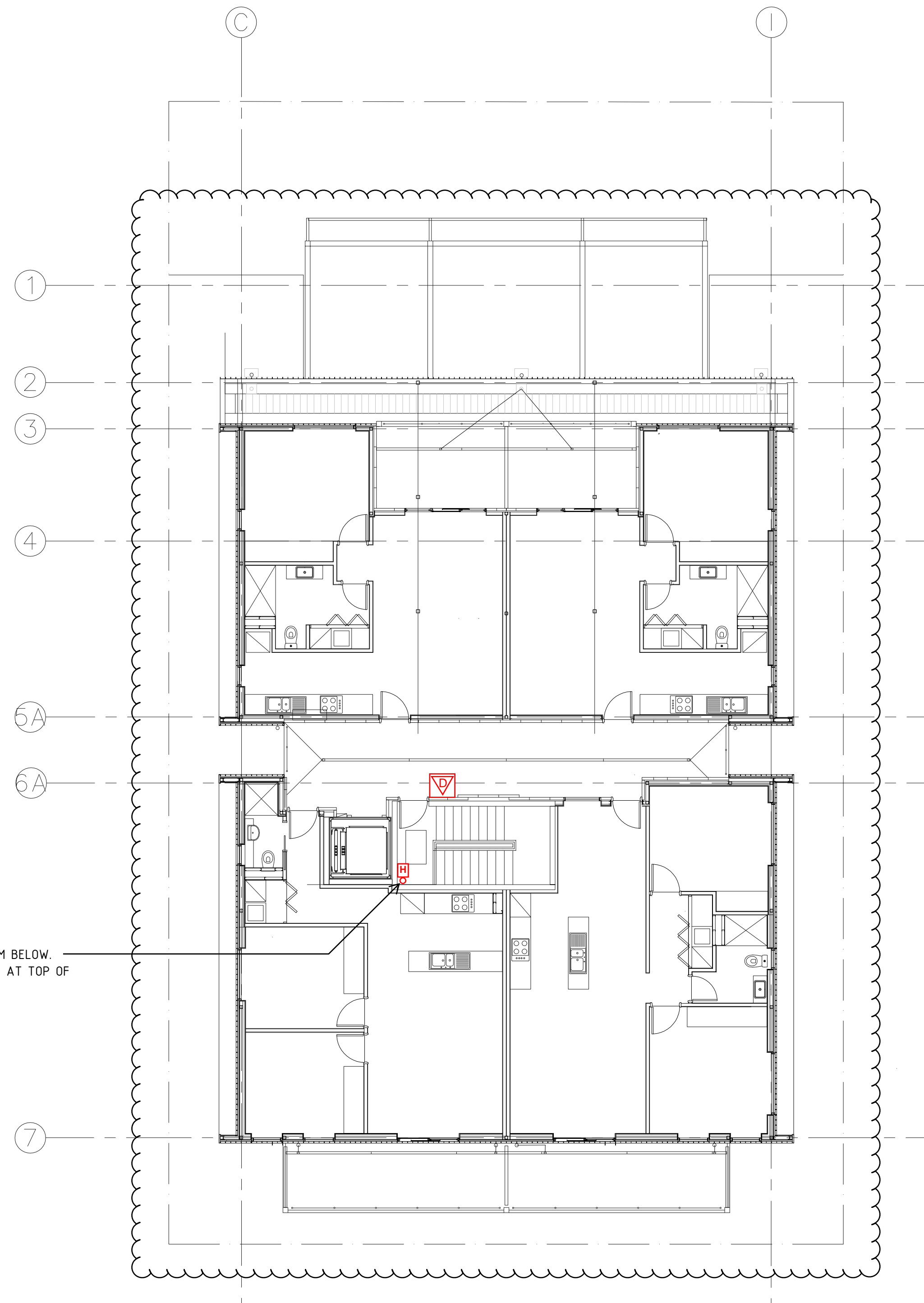
Ø150 HYDRANT PIPEWORK TO ROLL OVER AT HIGH LEVEL TO STAIR HALF LANDING.

PROVIDE Ø65 INTERNAL HYDRANT OUTLET ON STAIR HALF-LANDING TO SERVE FIRST FLOOR.

© Copyright Lucid Consulting Australia



SECOND FLOOR PLAN
SCALE: 1:100



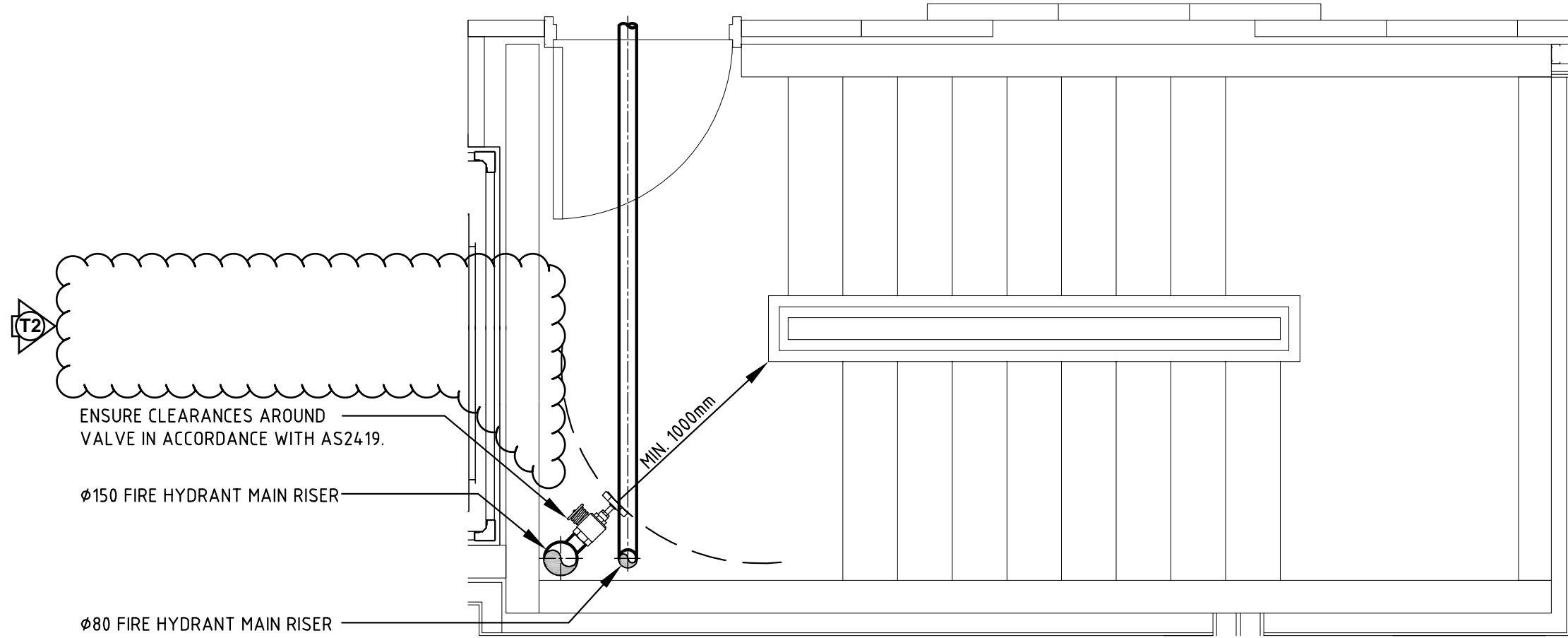
THIRD FLOOR PLAN
SCALE: 1:100

CONSTRUCTION ISSUE

A		CONSTRUCTION ISSUE	01.07.19	TT
REV	N	DESCRIPTION	DATE	CHKD
<div><div><div></div><div>LUCID</div></div><div>CONSULTING AUSTRALIA</div><div>Level 3/169, Pirie St Adelaide SA 5000</div><div>Phone: (08) 8407 9700</div><div>Email: adelaide@lucidconsulting.com.au</div></div>				
<div><div><div></div><div></div></div><div>STUDIO NINE</div><div>ARCHITECTS</div></div>				
PROJECT 168 PROSPECT ROAD, PROSPECT SA.				
DRAWING SECOND AND THIRD FLOOR FIRE SERVICES ARRANGEMENTS.				
<div><div><div>10500.512345</div><div>m</div></div><div>SCALEBAR 1:100</div></div>				
SCALE 1:100 @ A1		Size A1	FIRE SERVICES	
DESIGNER TT	DRAWN MT	DATE JUL Y 19	REV A	
DRAWING NUMBER LCE12584-F02				

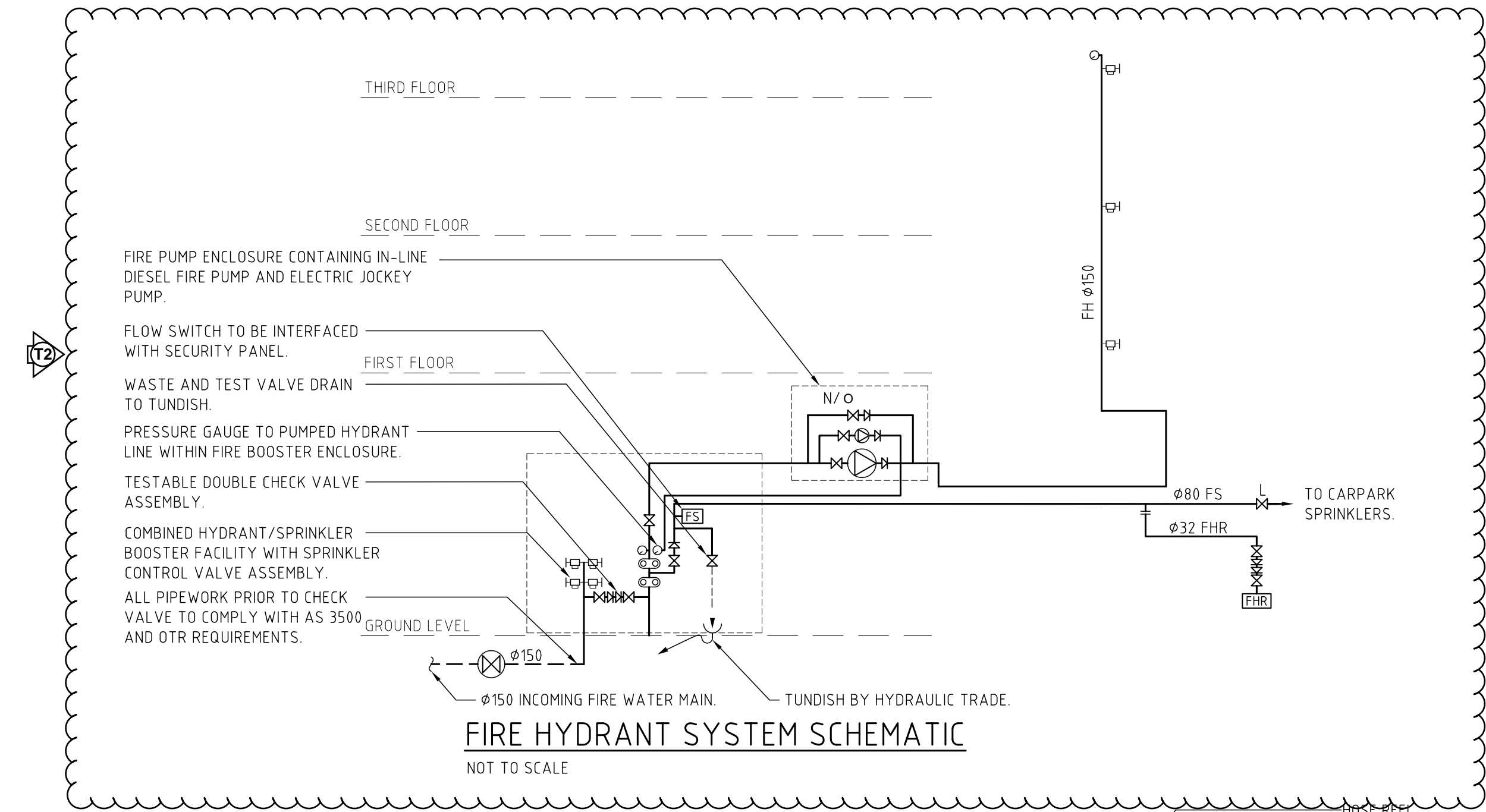
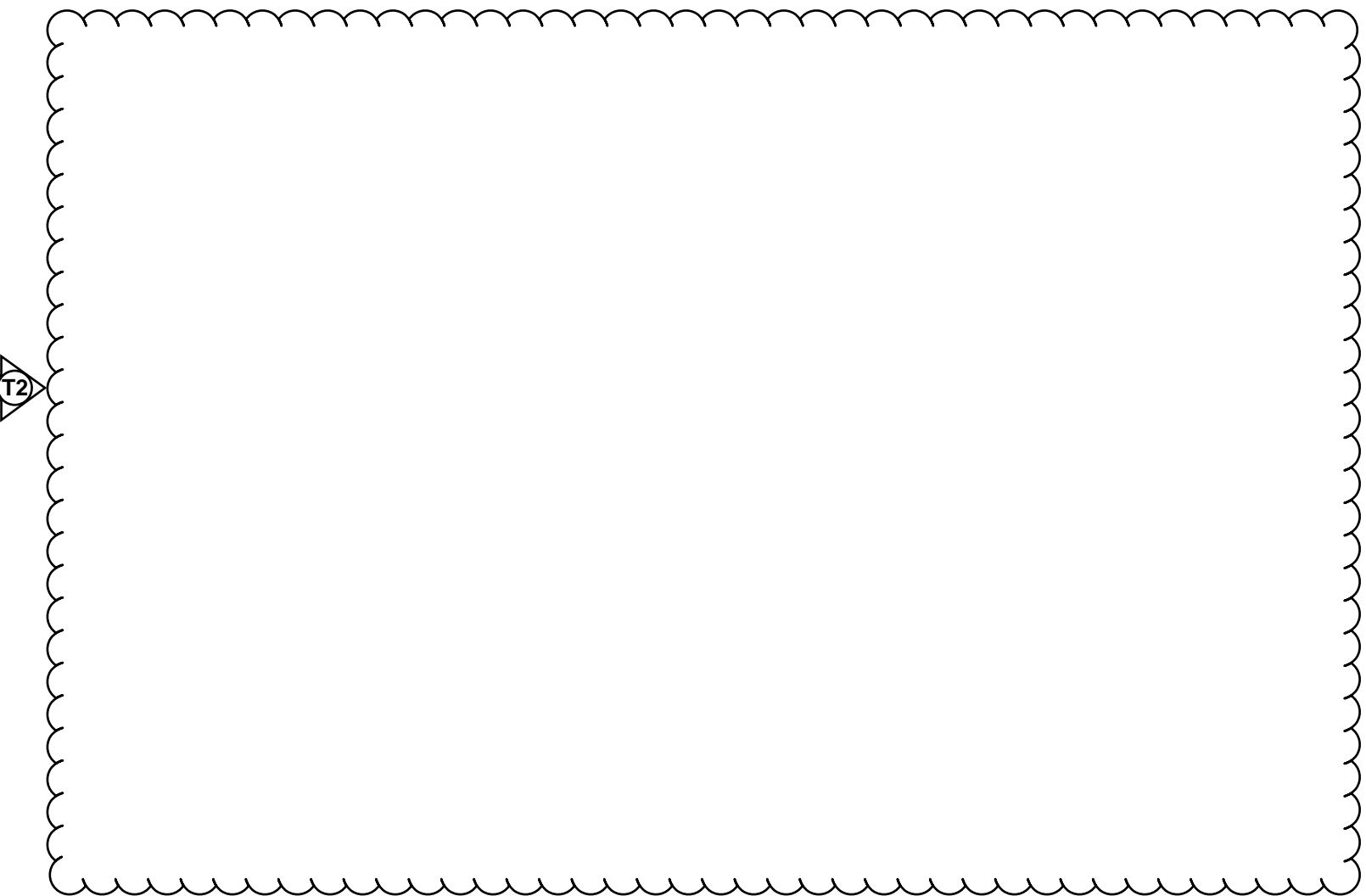
LEGEND OF SYMBOLS

- SINGLE HYDRANT OUTLET.
- ISOLATION VALVE.
- NON-RETURN VALVE.
- IN-GROUND ISOLATION VALVE.
- EXPOSED UPRIGHT SPRINKLER HEAD.
- SEMI-RECESSED CEILING MOUNTED PENDANT SPRINKLER HEAD.
- WINDOW WETTING SPRINKLER HEAD.
- FIRE HOSE REEL.
- COMBINED HYDRANT/SPRINKLER BOOSTER AND SPRINKLER CONTROL VALVE
- CHANGE IN PIPE SIZE/MATERIAL.
- CONTINUATION.
- PIPEWORK ROLL-OVER.
- PIPE RISER.
- PORTABLE DRY FIRE EXTINGUISHERS (4.5KG CAPACITY).
- PORTABLE FIRE EXTINGUISHER WITHIN WEATHERPROOF BREAK GLASS CABINET.
- FIRE PUMP (ARROW DENOTES DIRECTION OF FLOW).
- REVISION MARKER.



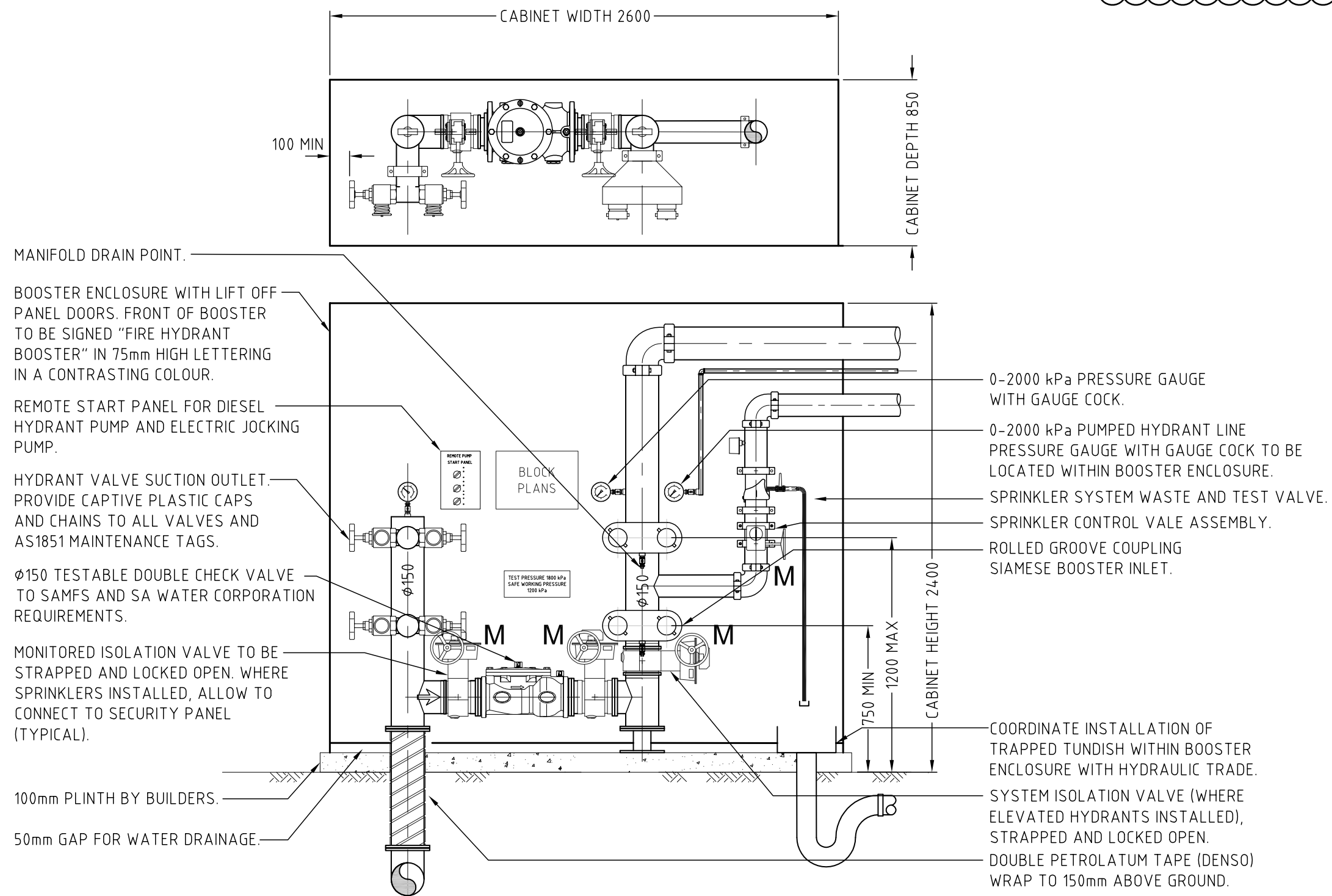
STAIR LANDING HYDRANT DETAIL

NOT TO SCALE
FOR INFORMATION ONLY



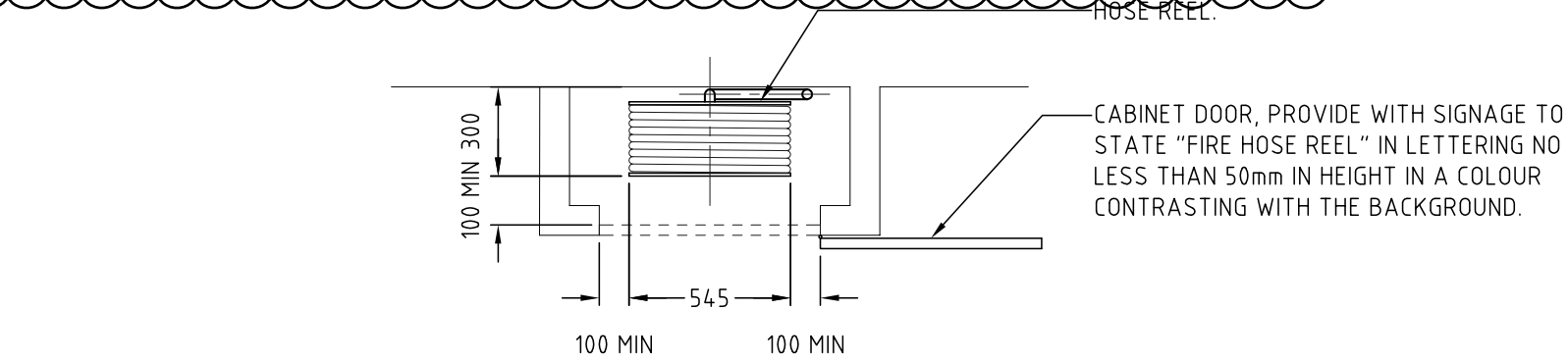
FIRE HYDRANT SYSTEM SCHEMATIC

NOT TO SCALE



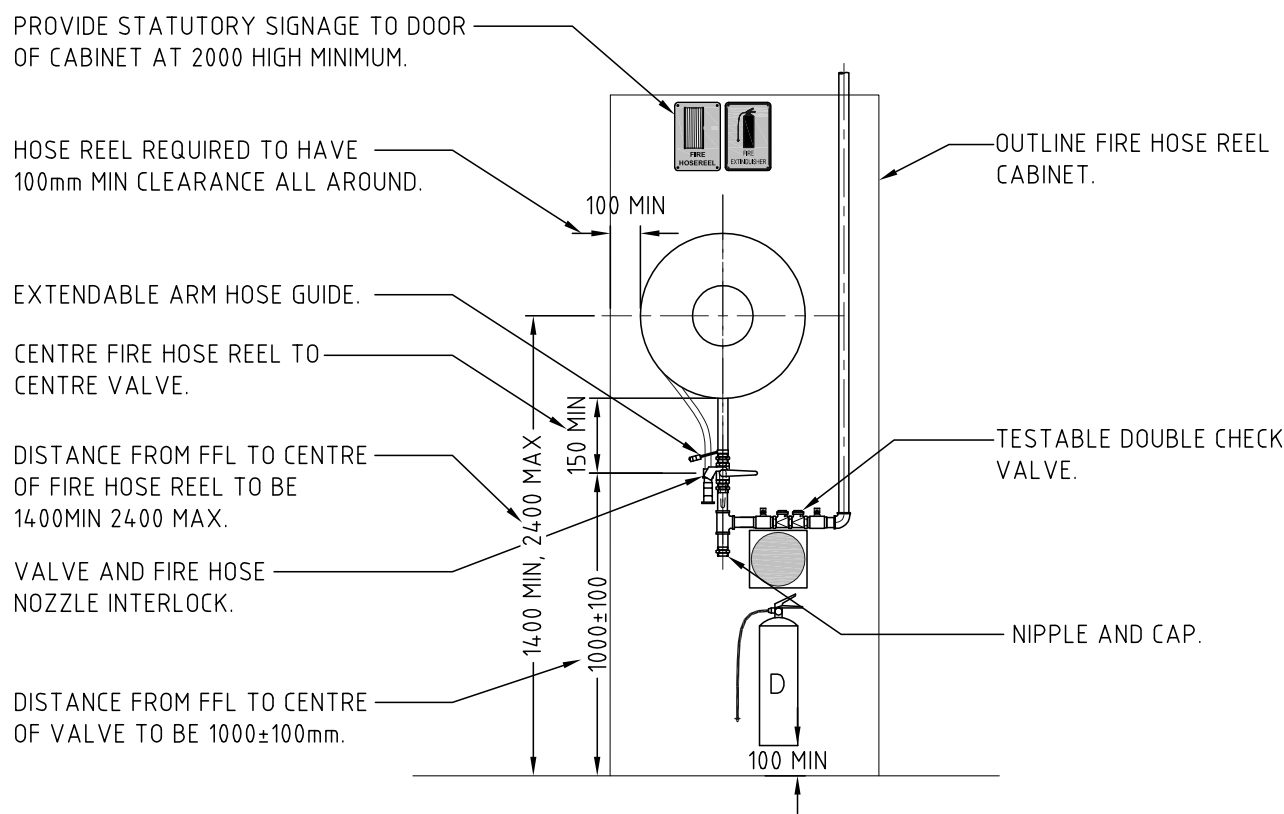
FIRE HYDRANT BOOSTER DETAIL WITH SPRINKLER CONTROL VALVE

SCALE 1:25
FOR INFORMATION ONLY



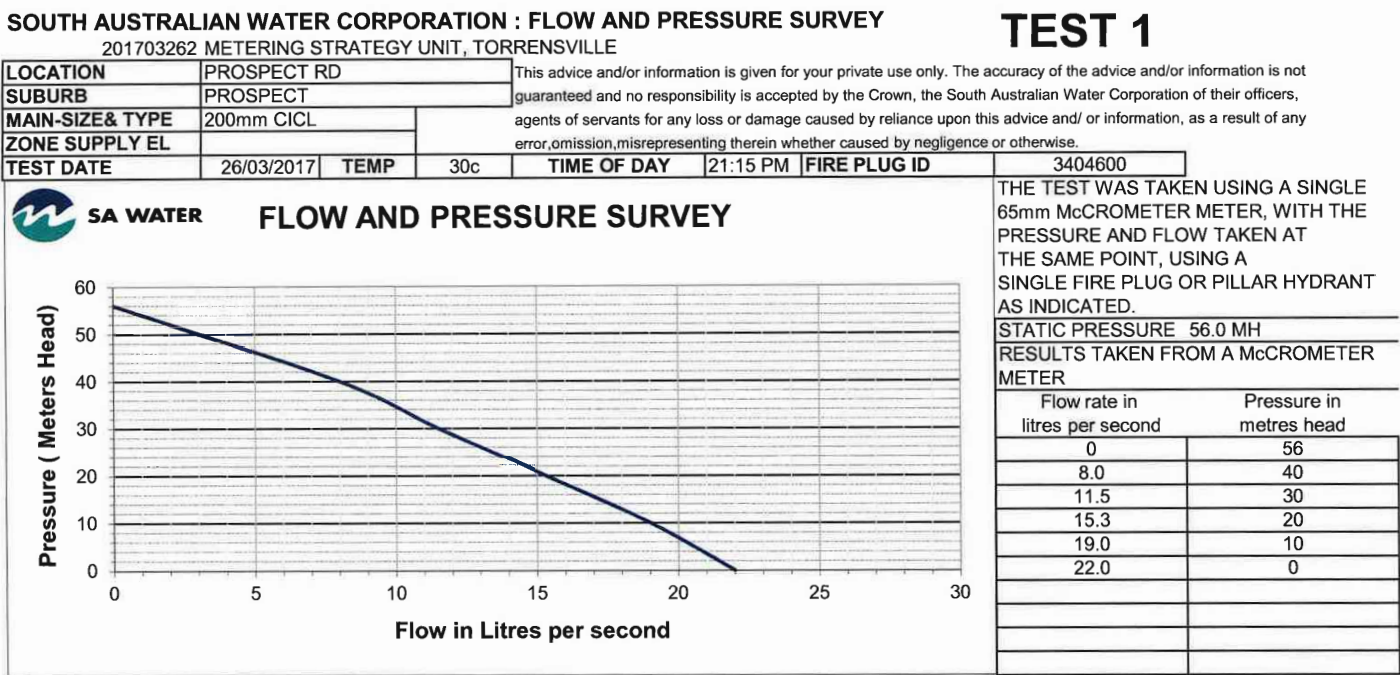
FIRE HOSE REEL CABINET - TOP VIEW

NOT TO SCALE
FOR INFORMATION ONLY



FIRE HOSE REEL CABINET DETAIL

NOT TO SCALE
FOR INFORMATION ONLY



SA WATER CORPORATION FLOW TEST FROM ø200 TOWNS MAIN IN PROSPECT ROAD.

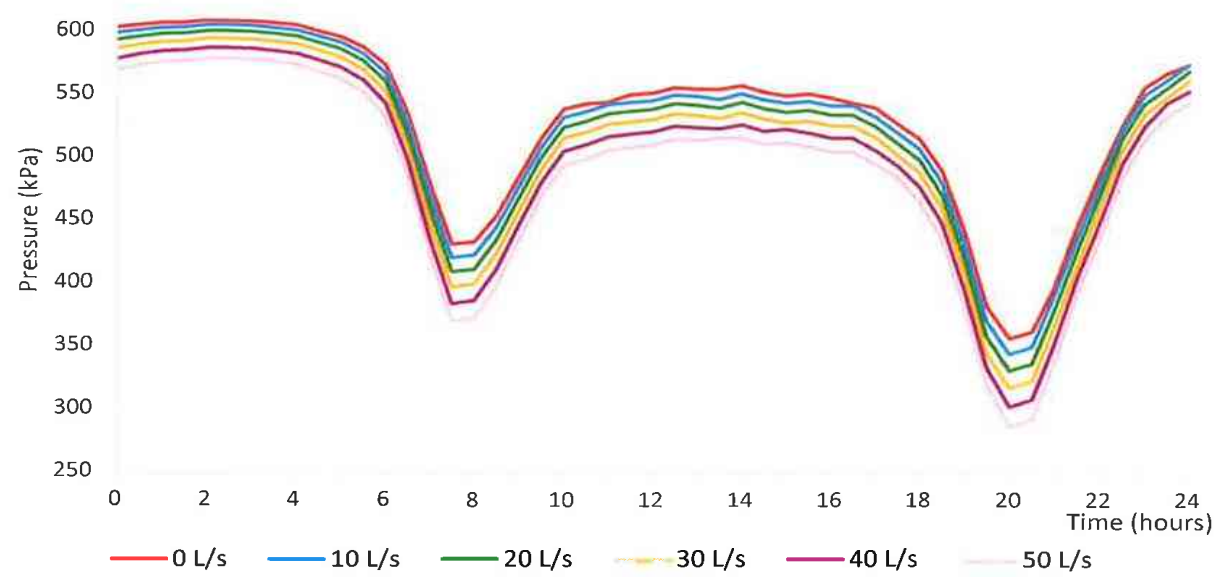


Figure 2 Available pressure at Node-15719a on ex. 200 CI main, Prospect Road Prospect

SA WATER CORPORATION NETWORK ANALYSIS OF ø200 TOWNS MAIN IN PROSPECT ROAD.

CONSTRUCTION ISSUE

A CONSTRUCTION ISSUE		01.07.19	TT
REV'N	DESCRIPTION	DATE	CHK'D
LUCID CONSULTING AUSTRALIA Level 3/169, Pirie St Adelaide SA 5000 Phone: (08) 8407 9700 Email: adelaide@lucidconsulting.com.au			
STUDIO NINE ARCHITECTS			
PROJECT 168 PROSPECT ROAD, PROSPECT SA.			
DRAWING LEGEND OF SYMBOLS AND DETAILS.			
1 0.5 0 0.5 1 2 3 4 5 m SCALE BAR 1:100			
SCALE 1:100 @ A1	Size A1	FIRE SERVICES	
DESIGNER TT	DRAWN MT	DATE JULY 19	REV'N A
DRAWING NUMBER LCE12584-F03			

© Copyright Lucid Consulting Australia